

Maybelline 2012 launch

Issued by [OLC Through The Line Communications](#)

21 Feb 2012

Off Limit facilitated the launch of Maybelline Leopard Lash Mascara on the 26th January 2012.

A page was taken out of the New York 2012 year calendar of the "working woman". Staying true to the theme the execution of the outfits and models was on another level, breathing works of art. Sophistication reigned supreme and it was no more evident than the venue chosen, with Table Mountain as your backdrop this luxury penthouse was the place to be, and having Blush n' Base to end of the night did not hurt either!



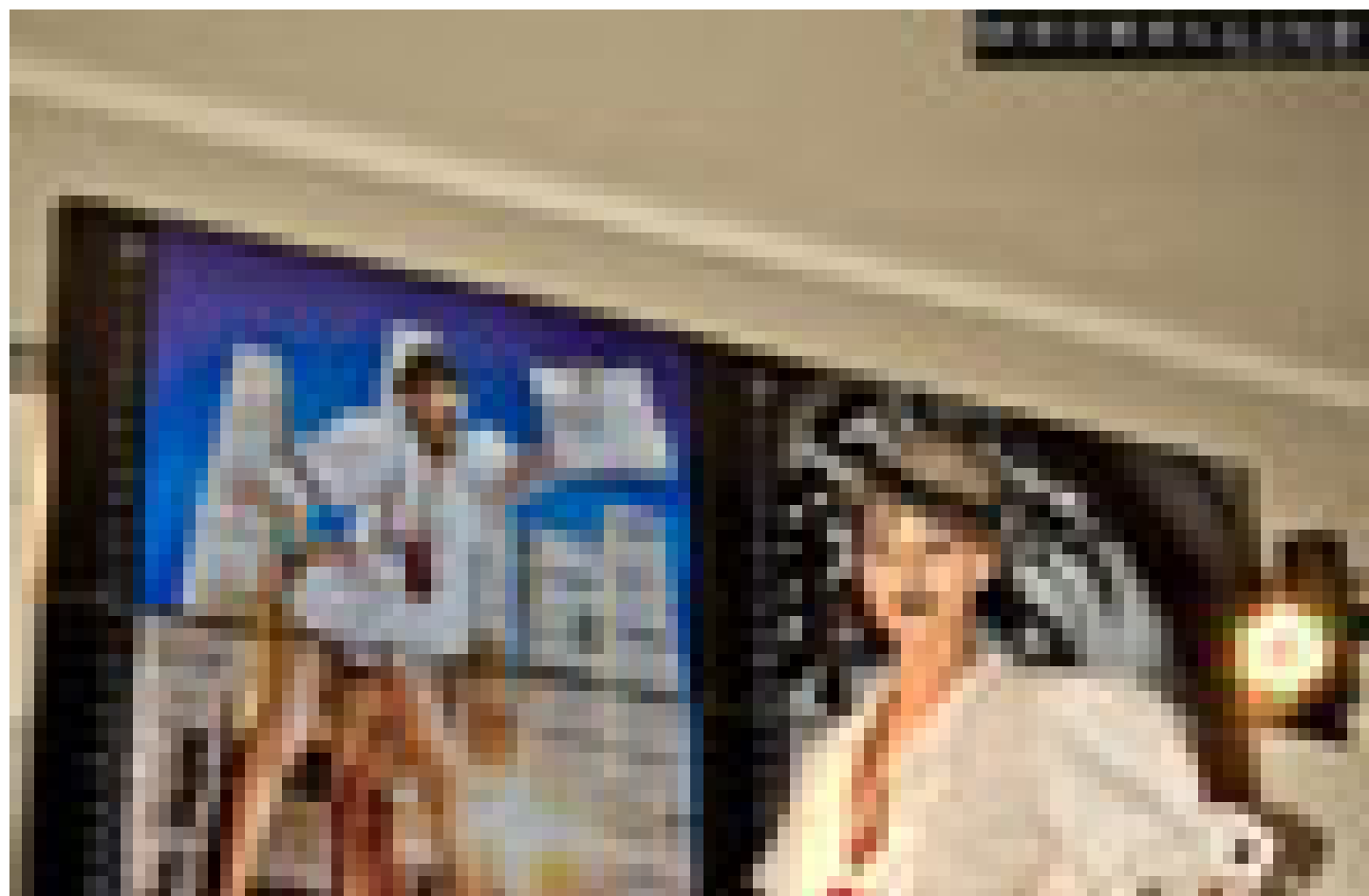
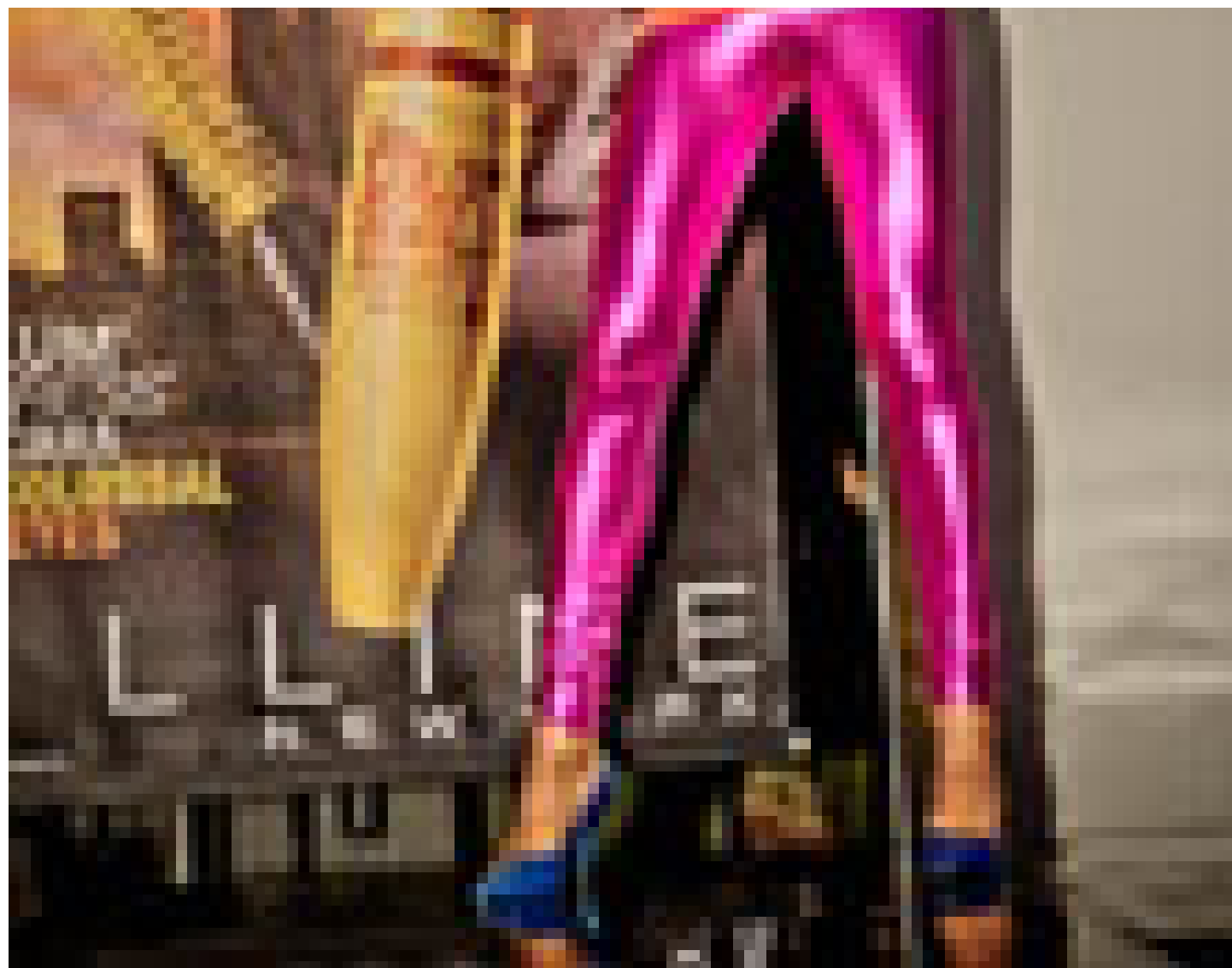




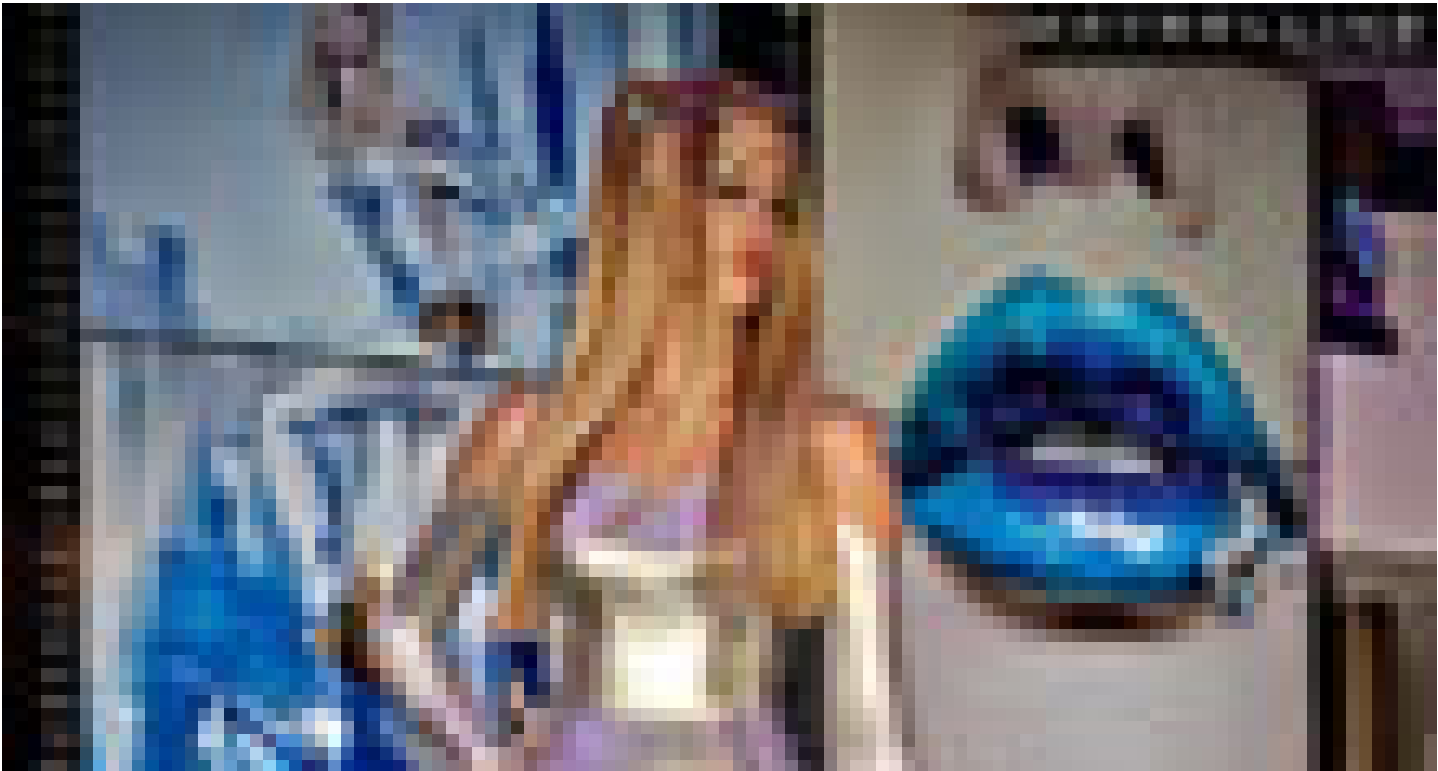


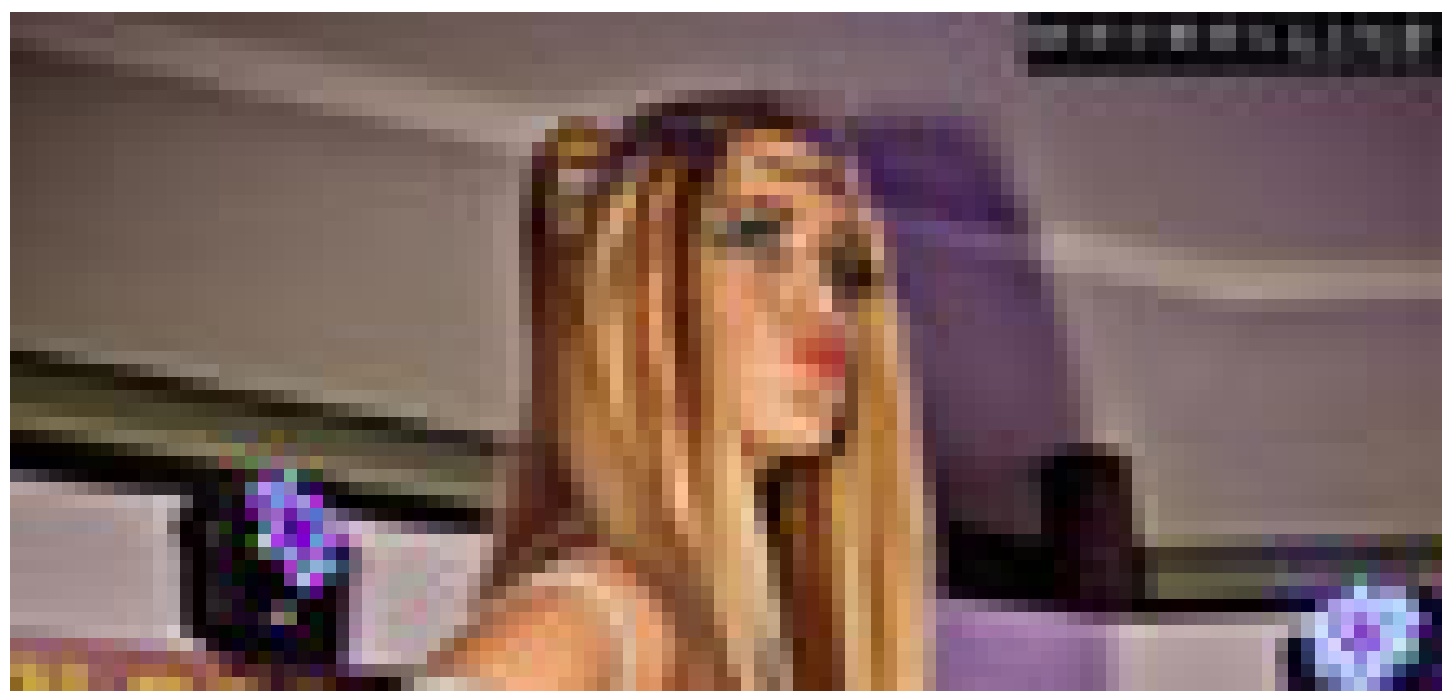
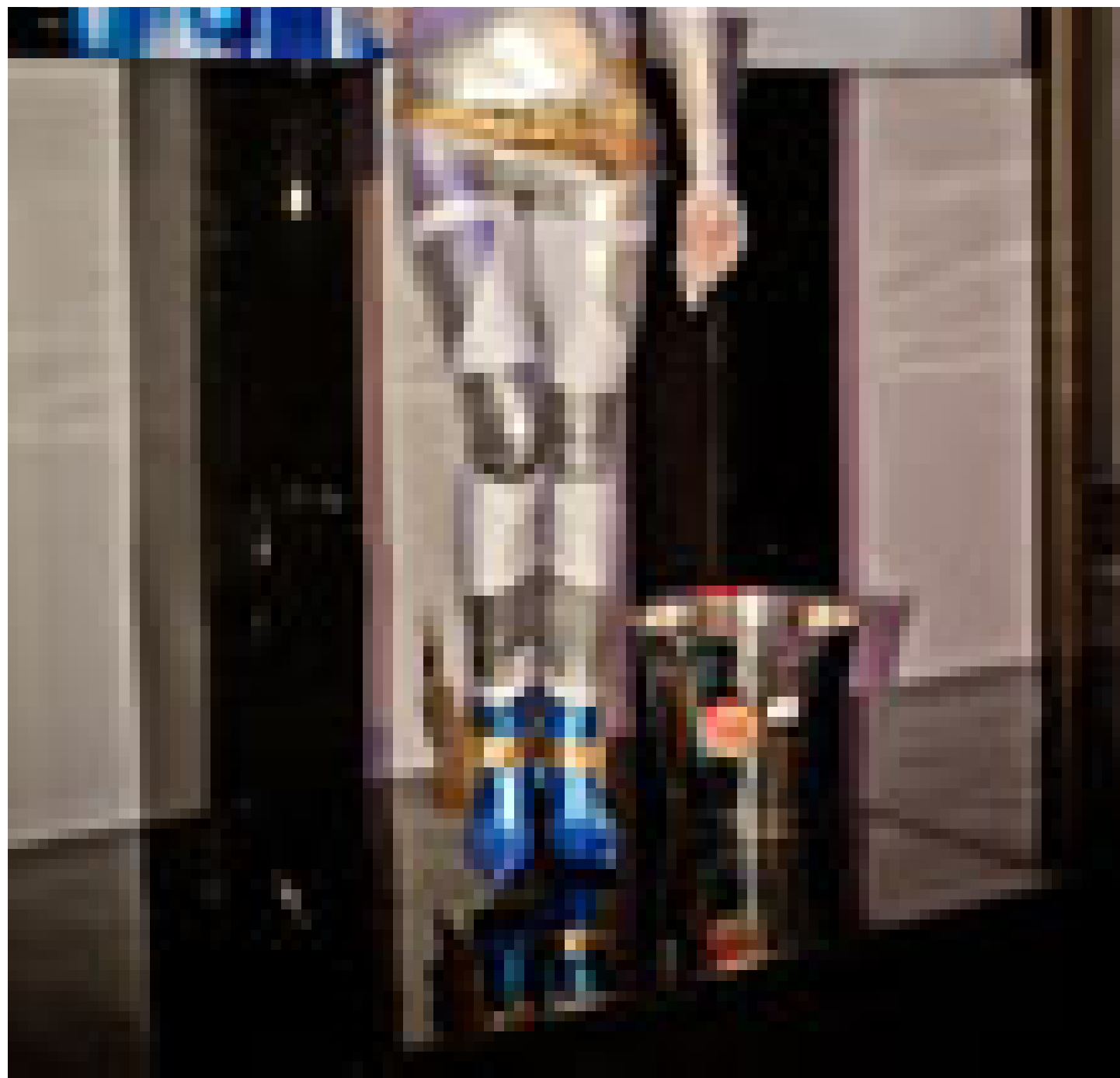


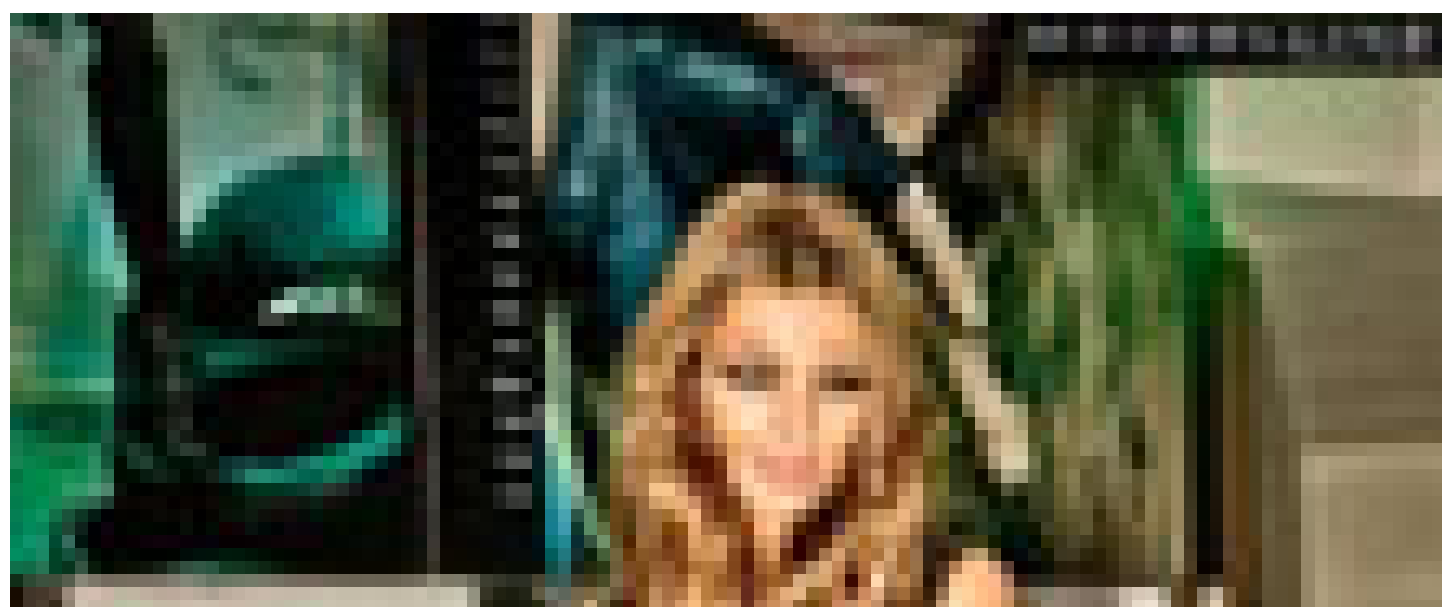


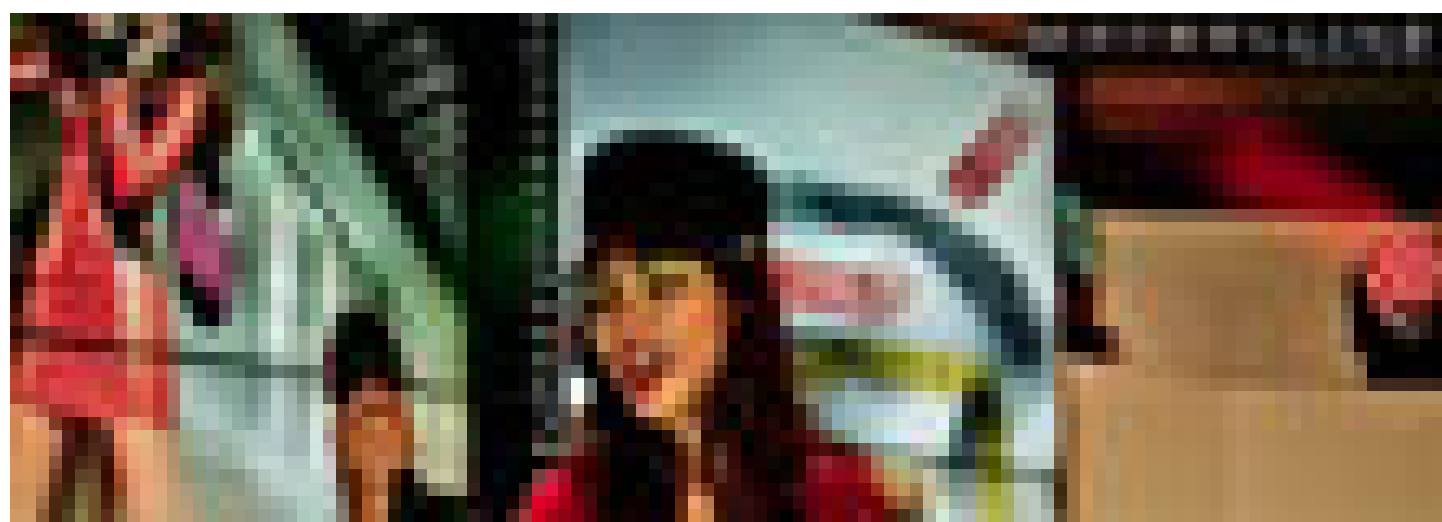














- " International rugby player, Eben Etzebeth teams up with Bayer as an ambassador for Berocca in South Africa 26 Feb 2024
- " Bayer South East Africa welcomes Jessica Nkosi as a brand ambassador for Bepanthen Derma 21 Feb 2024
- " Coke Studio brings 'real magic' to the neighborhood 7 Dec 2023
- " Jungle surprises South Africans with new Oat Drink, taking over the streets and skies of Mzansi 8 Nov 2023
- " OLC's fresh faces and new client collaborations: A new era of game-changing moves 3 Nov 2023

OLC Through The Line Communications



OLC Through The Line Communications is an award winning experiential marketing agency that aims to move businesses and brands forward.

[Profile](#) | [News](#) | [Contact](#) | [Twitter](#) | [Facebook](#) | [RSS Feed](#)

For more, visit: <https://www.bizcommunity.com>