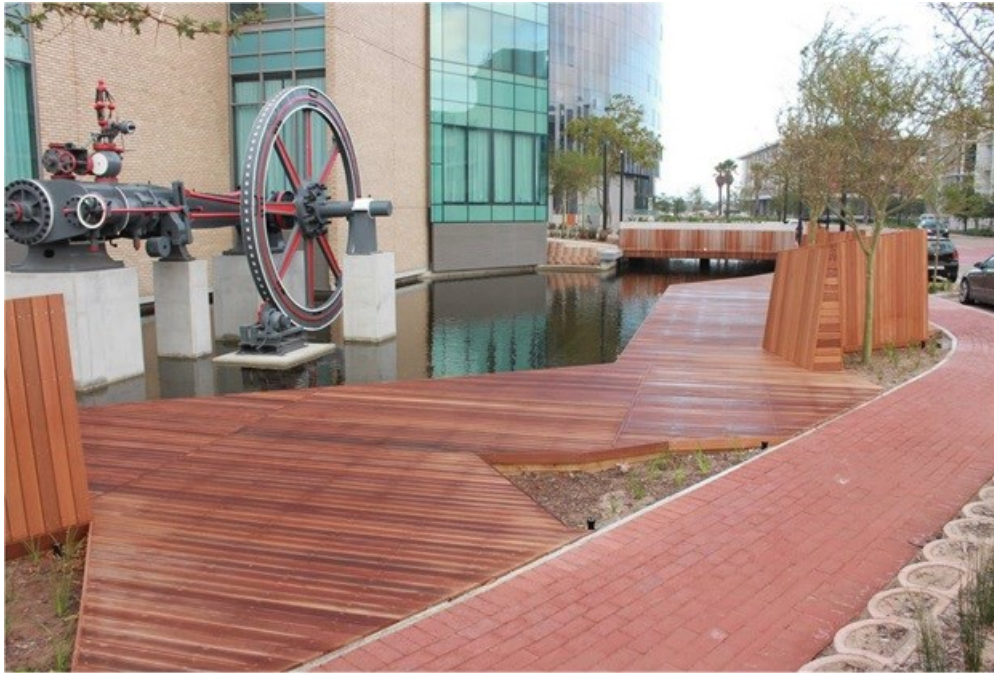


# ITC-SA Timber Construction Awards winners announced

The Annual Timber Engineered Product Awards was hosted by the Institute for Timber Construction (ITC-SA) at Nasrec Expo Centre in Johannesburg on 19 August. The event showcased and rewarded top class workmanship in the fields of decking, timber frame construction and roofing.

As part of the ITC-SA's ongoing mandate to establish and maintain the highest standards in the timber construction industry in South Africa, the awards are hosted every year in an effort to bring players in the timber construction industry together and to pay homage to members' outstanding work of the previous year.



Flywheel & Suspended Bridge - Town & Country Projects

"This year's awards saw the attendance of a record 135 guests, to whom we extend our thanks for making the event a vibrant and successful one," says Chris Hobson, incoming ITC-SA chairman, adding, "The awards are open to all timber frame builder, deck builder, roof erector and fabricator members of the ITC-SA, and submission categories include: Decks & Boardwalks; Alterations & Additions; Structures Smaller than 120m<sup>2</sup>; Structures Larger than 120m<sup>2</sup>; Structures Larger than 220m<sup>2</sup>; and Roofing: Residential, Commercial & Exposed Trusses, a new addition to the awards' categories."

## Diversity and inclusion in the sector

Lyndsay Cotton, LCP Roofing GM and outgoing chairman of the ITC-SA kicked off the evening with a brief talk on the business case for diversity and inclusion in the sector, which was followed by an insightful product presentation on the MiTek Industries SA brand by Stewart Murray, MiTek Industries SA manager. This was followed by a presentation by the evening's guest speaker, Dr. Melanie Blumentritt, who is a post-doctoral fellow at Stellenbosch University at the Department of Forestry and Wood Science, with a background in solid wood and wood composites production and mechanical testing, wood anatomy, ultrastructure and chemical evaluation, and life-cycle assessment of wood products. Dr. Blumentritt's talk proffered the question, 'Should we store carbon in wood?' and covered the ways in which the use of wood in long-lived products, like timber construction products, can help to mitigate climate change.



House du Preez - Eco Log Homes

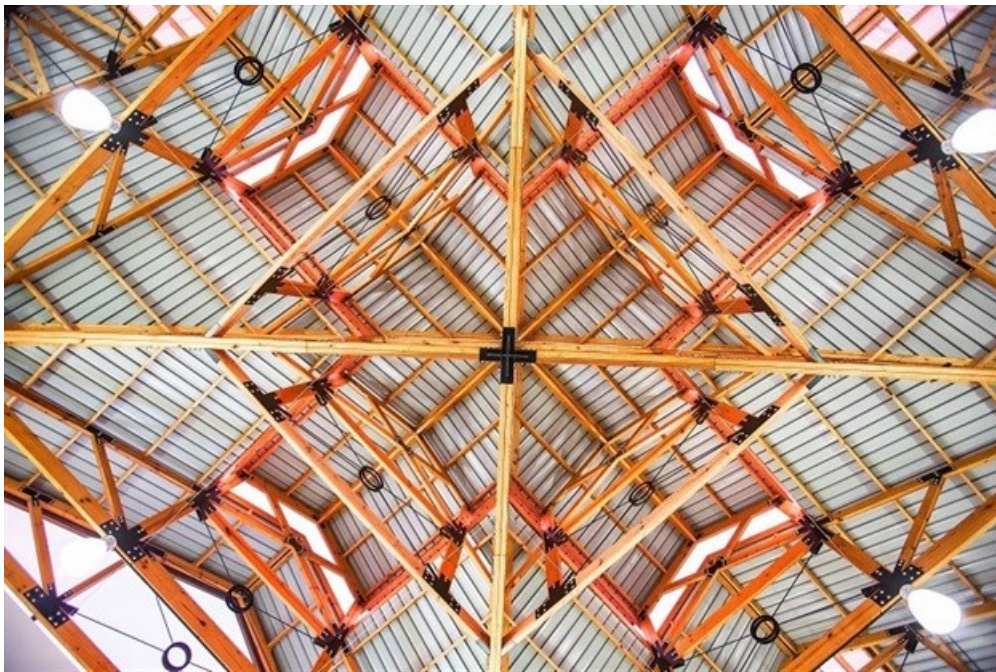
## **ITC-SA Annual Timber Engineered Product Awards for 2015 winners**

Four entries were received in the Alterations & Additions category, which ranged from economical extensions to full-scale remodelling. The Structures Smaller than 120m<sup>2</sup> category saw four entries, varying from a 'granny flat' to a beautiful starter home, all of which clearly demonstrated a high standard of skills and finishes.

Five entries were received for the Structures Larger than 120m<sup>2</sup>, but below 220m<sup>2</sup>; these projects ranged from beach homes to those built on particularly sensitive sites, showcasing the versatility and gentle approach to construction made possible with timber frame. The Structures Larger than 220m<sup>2</sup> category saw three entries, which all illustrated a variety of styles and quality finishes capable of satisfying the most discerning taste.

Eight entries were received for the new Roofing category, which encompasses commercial and residential roofs as well as exposed trusses. All entries demonstrated the inherent versatility timber lends to the design, fabrication and erection of roofs across a broad spectrum of building styles.





Vergelegen Shopping Centre - Rooftek Trusses

## Decks & Boardwalks

### Gold:

Project name: Flywheel & Suspended Bridge

Year completed: 2015

Designed by: Planning Partners

Built by: Town & Country Projects

This impressive commercial series of decks and bridges at an upmarket business and conference centre demonstrated the ability of the contractor to elegantly manage the interface of timber and bespoke steel.

### Gold:

Project name: Bridge Thompson

Year completed: 2015

Designed by: Cottage Concepts

Built by: Cottage Concepts

Bridge Thompson, an unusual miniature wooden bridge structure for a model steam train enthusiast presented a number of challenges to achieve an attractive and true-to-scale end product.

### Silver:

Project name: Deck Bonnema

Year completed: 2015

Designed by: Anton Bonnema

Built by: Deckscapes

Deck Bonnema called for the creation of a screened alfresco area with a pergola over an existing flat roof, requiring skilled design and carpentry from the team.

### Bronze:

Project name: Deck Fensham

Year completed: 2015

Designed by: Charles de Jongh

Built by: Deckscapes

This project included the construction of a poolside deck with additional timber screens.

## **Alterations & Additions**

### **Gold:**

Project name: House Hirschon

Year completed: 2015

Designed by: Kotlowitz Marais Architects

Built by: Timbercraft

Engineer: Mike Humby

This complex project required the modernisation and enlargement of an existing ground and first floor home, creating a second-floor, two-bedroom flatlet, which was seamlessly executed by Timbercraft.

### **Silver:**

Project name: House Cillie & Fouche

Year completed: 2015

Designed by: Hardie van Schalkwyk

Built by: Henton Homes

Engineer: Deon Botes of Poise Engineers

House Cillie & Fouche called for the addition of a master en suite, study, scullery and single garage while the owner occupied the home. The project was completed in five months and to a visibly high standard.

### **Bronze:**

Project name: House Jones

Year completed: 2015

Designed by: Pursey & Boucher Architectural Services

Built by: Villager Timber Products

Engineer: Jim Weaver Structural Engineers

House Jones, once a single-storey dwelling with height constraints, was converted into an attractive double-storey home, maximising the available footprint.

## **Structures Smaller than 120m<sup>2</sup>**

### **Gold:**

Project name: House Puttick

Year completed: 2015

Designed by: Cecilia Fraser Architects

Built by: Timber Home Kits

Engineer: VPG Structural Engineering

Clinging to the slope of a mountain, 42m<sup>2</sup> House Puttick is a stunning example of the contractor's ability and the advantages of timber frame construction.

### **Silver:**

Project name: House Bing

Year completed: 2015

Designed by: Cecilia Fraser Architects

Built by: Timber Home Kits

Engineer: VPG Structural Engineering

House Bing, a 119m<sup>2</sup> timber frame two-bedroom cottage, took only two-and-a-half months to construct in the back yard of an existing home.

## **Bronze:**

Project name: House Hopkins

Year completed: 2015

Designed by: Sadie Jones Architects

Built by: Timber Home Kits

Engineer: SKC Masakhizwe Engineers (Pty) Ltd

This neat, eco-friendly 50m<sup>2</sup> cottage is proudly off the grid, contributing to the structure's low overall environmental impact.

## **Structures Larger than 120m<sup>2</sup>**

## **Gold:**

Project name: House Riddell

Year completed: 2015

Designed by: Jacques Cronje Timber Design

Built by: Henton Homes

Engineer: Deon Botes of Poise Engineers

House Riddell's remote location required diligent planning to avoid possible down time. The building had to be repositioned, due to its proximity to a Milkwood tree, but even so, the project was completed within six months.

## **Silver:**

Project name: House Oosthuizen

Year completed: 2015

Designed by: Alan Paine Designs

Built by: Logo Homes

Engineer: Gadomski Consulting Engineers

Clinging to the mountainside under Boyes Drive in St. James, House Oosthuizen is an attractive vertically clad timber frame home with views over False Bay.

## **Bronze:**

Project name: House van der Walt

Year completed: 2015

Designed by: Christal Beukering

Built by: Dawwen Construction

Engineer: Peter Wilschut Consulting Structural Engineers

Perched on a dune above the high water line, House van der Walt tested the skills of the Dawwen Construction team, resulting in a getaway that is the envy of many.

## **Bronze:**

Project name: House van der Vyver

Year completed: 2015

Designed by: I Berger

Built by: Cottage Concepts

Engineer: Anton van Riet

House van der Vyver, a uniquely challenging project, called for the construction of a double-storey home on severely sloping solid rock in an eco-sensitive reserve.

## **Structures Larger than 220m<sup>2</sup>**

### **Gold:**

Project name: House du Preez

Year completed: 2015

Designed by: Eugene Barnard Architects

Built by: Eco Log Homes

Engineer: Hull Consulting Engineers

House du Preez, a post-and-beam structure, is on a game farm with no on-site accommodation, which made for strict working hours that challenged the Eco Log Homes team to achieve this magnificent bush getaway. The project's attention to detail and interesting architectural features impressed the judges.

### **Silver:**

Project name: House Bolitho

Year completed: 2015

Designed by: Alan Paine Designs

Built by: Logo Homes

Engineer: Gadowski Consulting Engineers

Stringent regulations and height restrictions governing this heritage area of Simonstown and the discovery of a main sewer running through the site challenged the architect and contractor to meet the client brief. The result is an asset to the surroundings and a tribute to the Logo Homes team.

### **Silver:**

Project name: House Richards

Year completed: 2015

Designed by: Alan Paine Designs

Built by: Logo Homes

Engineer: Gadowski Consulting Engineers

Strict new council regulations regarding building on the side of a mountain stimulated the ingenuity of both architect and engineer on this project, who provided practical floor plans and pleasing elevations to maximise the structure's available footprint.

## **Roofing: Residential, Commercial & Exposed Trusses**

### **Gold:**

Project name: House Viking Trust

Year completed: 2015

Designed by: Klaus Körber

Roofing structure: Pitch 45 Roofing

Engineer: A19 Roof Inspectorate

This extensive renovation required neat, accurate carpentry to produce, erect and brace this complex exposed roof structure, which pays homage to the beauty of design symmetry.

## Gold:

Project name: Reddford House, Northcliff

Year completed: 2015

Designed by: Century Property Developments

Roofing structure: LCP Roofing

Engineer: Errol Hobden

A turnkey project where close cooperation with the design team ensured that the client brief was met. This has resulted in state-of-the art exposed structural roofing elements being used as features to enhance the buildings' ambience.

## Gold:

Project name: Vergelegen Shopping Centre

Year completed: 2015

Designed by: Barry Slavin of Slavin & Associates

Roof trusses manufactured by: Rooftek Trusses

Roof trusses erected by: Pitch 45 Roofing

Engineer: Schalk Brits & Conrad van Zyl of MiTek Industries SA

The harmony of design, construction detailing and robust appearance of this shopping centre roof will have many a shopper looking upwards. Its rugged beauty and symmetry illustrate the contractor's ability to evoke the past by recreating the forms and shapes of yesteryear.

## Silver:

Project name: Hazeldean Office Park

Year completed: 2015

Designed by: Greg Koenderman of MWLF Architects

Roofing structure: Giant Engineering

Engineer: Stephan Vermaak of Sivist

Hazeldean Office Parks showcases the effective use of timber roof trusses on large span commercial projects with complex architectural detailing in exposed areas.

## Bronze:

Project name: Reddam International College

Year completed: 2015

Designed by: Century Property Developments

Roofing structure: LCP Roofing

Engineer: Errol Hobden

This impressive project was designed, supplied and erected as a turnkey service to the main contractor. Complex curved and circular roof structures were no match for the experienced LCP Roofing team who went above and beyond the call of duty to complete this roofing structure.

## Bronze:

Project name: House Alcock

Year completed: 2015

Designed by: Walkersmith Architects

Roofing structure: Lloyd-Warren Construction

Engineer: Gavin Brown & Associates

House Alcock's roof showcases beautiful old-school design and engineering coupled with highly skilled carpentry. Attention to detail and high quality finishes lend an attractive, old-world appearance to the exposed Douglas Fir hammer roof trusses.

## **Bronze:**

Project name: House Majorie

Year completed: 2015

Designed by: Afro Plan Architects

Roofing structure: LCP Roofing

Engineer: Errol Hobden

Interesting truss designs with extensive architectural details were skilfully addressed by LCP Roofing's design, fabrication and erection teams. The end result more than met the contractor's brief.

## **Long service awards**

Ten- and twenty-year long service awards were presented to truss fabricators who were present at the awards for their service to the ITC-SA. These are as follows:

### **10 Years' Service:**

Braytons – Dundee

Giant Engineering

Maxco Truss Systems

Nelspruit Truss

Patria Truss Manufacturers

PJ Roofs

Rooftek Trusses

### **20 Years' Service:**

BUCO – Pinetown

BUCO – Honeydew

Truss 'n Timber

Truss Mecca

"There were many outstanding individuals who were involved in making the ITC-SA Timber Engineered Product Awards the success it was and we would like to thank all of those who contributed. A special thanks to our esteemed judges who offered of their time and expertise to judge the awards submissions," remarks Hobson. "Lastly, we thank ITC-SA members who entered the awards for sharing the fruits of their labour with us, for playing their own part in upholding our industry's standards and for raising the awards' goal posts each year. The ITC-SA Timber Construction Awards for 2015 are a glowing testament to what our industry can produce and of which we can all be justly proud."

For more, visit: <https://www.bizcommunity.com>